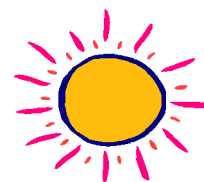


# Midwest Conservatory of Music

## The 4<sup>th</sup> Annual Summer Chamber Music Camp and Concert 2012



Students will be assigned to trios or quartets. Each group will meet for coaching every day with one of our faculties. Students will perform at the Schaumburg Township Library on Sunday, July 22 at 2:00pm.



Dates: Coaching/ July 16, 2012 – July 21, 2012  
**Session A:** 10:00am to 12:00pm  
**Session B:** 1:00pm to 3:00pm  
 (You can choose one of the sessions.)  
 Concert/ July 22, 2012 at 2:00pm  
 @Schaumburg Township Library

Location: Midwest Conservatory of Music  
 525 W. Higgins Road, Suite 205, Hoffman Estates, IL 60169

Eligibility: Violin Vivaldi A minor Op. 3, No. 6 or higher level music  
 Viola Suzuki Book 3 or higher  
 Cello Breval Sonata in C or higher level music  
 Flute Flute music by French composers or higher level music  
 Oboe Concert & Contest Collection for Oboe by Voxman or higher  
 Clarinet Rubank intermediate or higher level music  
 \*For all instruments, if you are not taking private lessons during the summer, you will NOT be eligible to participate. No age limit.

Faculty: Taka Matsunaga (violin/ viola), Madeline Capistran (violin/ viola), Brian Hoffman (cello), Eun Kim (cello), James Donahue (flute), Naomi Matsunaga (oboe), Kumiko Nowlan (clarinet)

Tuition: \$300 per student (Check only please. Make checks payable to Midwest Conservatory. We also offer family discount. Please ask us for more details.)

Deadline: June 15, 2012 \*Please mail the application below along with the check to:  
 Midwest Conservatory of Music  
 525 W. Higgins Rd, Ste 205, Hoffman Estates, IL 60169.  
 Please contact us at (847) 312-3690 for more details.

Cut Out

### Midwest Conservatory of Music / Summer Chamber Music Camp 2012 Application

I will attend all dates from July 16 to July 22 for Summer Chamber Music Camp.

Student Name: \_\_\_\_\_ Age (if under 18): \_\_\_\_\_

Instrument: \_\_\_\_\_

Preferred Session (Circle One): Session A    Session B                      Years of Private Instruction: \_\_\_\_\_

Ensemble Experience: \_\_\_\_\_

Name of Lesson Teacher & Contact Info: \_\_\_\_\_

Student Address: \_\_\_\_\_

Student Phone: \_\_\_\_\_ E-mail: \_\_\_\_\_